



## **Community Engagement Forum (CEF) virtual meeting Boyd Valley CEF**

**10 March 2021 - 1pm – 2pm**

### **Present**

Simon Stevens (SS)	Chair
Marian Mussah (MM)	SGC Community Engagement Officer
Amy Evans	SGC Community Engagement Officer
Urfan Siddiq	SGC Public Health
Lauren Worsley	SGC Community Learning and Skills
Louise Young	SGC Note Taker
James Rochford	Avon and Somerset Police
Lee Ralph	Avon Fire Rescue Service
Cllr Ben Stokes	SGC
Cllr Matthew Reed	SGC
Cllr Erica Williams	SGC
Cllr Stephen Reade	SGC
Dan Budd (DB)	Census Engagement Manager – Census 2021
Maisy Griffiths	Health Watch South Gloucestershire
Cllr Bob Taylor	Westerleigh Parish Council
Elaine Weightman	Doynton Parish Council
Becky Feather	Press
Plus 2 residents	

### **1 Welcome, apologies introductions new chairs and vice chairs and ground rules of meeting**

SS welcomed everyone to the meeting.

### **2 Agree minutes of the last meeting of 1st December 2020**

The minutes of the meeting of 1st December 2020 were agreed as a true record. Two residents didn't receive the previous minutes so MM will be sending them out to them.

### **3 Public Health update, Urfan Siddiq SGC Public Health**

US gave a presentation and noted: (*see appendix 2*)

- Decreased cases in the area by 48.1%
- Overall week by week decrease in cases

- Vaccinations have increased to over 116,000
- A graph which indicates a good decline in cases
- Our average is slightly higher than the South West average.
- Achieved 80-90% success roll out with the vaccine
- Rates of infection has seen a 28% decrease
- Brazil variant has a good response from the affected areas
- Roadmap for restrictions lifted
  - 8<sup>th</sup> March – school, university, college students returning
  - 29<sup>th</sup> March – travel and meeting more people
  - Continue rapid testing for students and teachers
  - Increase contact tracking to break the chain and mitigate the risks

Q What and where are the resources in contact tracing?

A The staff will be going out in the coming weeks and working together with Public Health and contact tracing to find a way forward regarding Covid 19. It is something we would like to keep doing during and after the roadmap stages as we have seen it work during restrictions. The Council will provide resources during restrictions, and also after the roadmap has ended.

#### **4 Update from Avon Fire and Rescue Service (AFRS)**

AFRS had sent a report (*see appendix 3*).

Lee Ralph reported the following:

- The team has been volunteering by marshalling at Bath Race Course, Aston Gate and Emersons Green Science Park as part of the vaccine and surge testing rollout
- Overall quiet on calls – seen a drop from this time last year. There are also less people in offices and factories
- We have helped the ambulance services with category 1 help
- Dealing with the usual 999 calls which is good as we have all the PPE needed
- Home fire visits still not going ahead because of Covid. Any vulnerable people are still likely to get a visit if we are needed and they are unable to do themselves
- Overall fairly quiet, so we have been offering our services elsewhere

Q The home fire visits you said you can't do at the minute. Do you plan to have a push on this after Covid is over?

A We are still offering our services to the vulnerable or if they have been advised to have it. The push will be sometime in the future.

#### **5 Update from Avon and Somerset Police**

Beat Officer James Rochford reported the following:

- Issues around Westerleigh and the Crematorium regarding off road motorcycles and quad bikes. People turning up and going through the access road and fields damaging the farmer crops. The bikes are also not registered so we intend to patrol as often as possible
- Pucklechurch – there is a 16 plate motorcycle that needs to sort out its exhaust; this is also being shared across a Facebook page to make residents aware. If

anyone sees him, do get in touch and we can issue a notice and seize the vehicle

- There is also drug taking in the park in Pucklechurch to be aware of. Happens around our late shifts
- Rock Road, Wick has seen an increase in young people in cars hanging around
- Tog Hill has been closed down over the last three months for renovation. The metal fence has been damaged by a vehicle so we have seen Covid breaches from young people. We'll be paying more attention to this again on our late shifts.

Q There have been issues from residents regarding a travelling group around Hinton driving on the common around 2-3am. Police were called out but the group then moved to Bath Park and Ride. There was also petty crime door to door and theft from the local shop. This is leaving some anxiety throughout the community and wondered what the policy is on that situation and if there is a follow up?

A I was off over that period, but my colleagues have been made aware of the situation. It all depends who owns the land whether it is Council owned or private. I am happy to do some more digging on the situation and pay high attention to those areas, but it seems that they only spend small periods of time in one place.

Q I have registration numbers if that helps?

A We will start a log and will do some intelligence work and run through all of the issues. We will also liaise with trading standards and offensives to look into this further.

Q Westerleigh Road opposite the Crematorium, is that a Council cut through?

A In short, no but it's an area in concern.

#### **Action – MM to inform Rob Walsh/Mark King for potential improved security.**

Q Is there a reference for the alerts or should we just ring and say motorcycle in Pucklechurch?

A Best to ring 101 or email us. It can depend on priorities at the time but we would aim to get there ASAP.

#### **6 Update of issues from previous meeting**

*See appendix 1*

#### **7 Discuss new local community issues/Future agenda items for consideration**

<b>Issue and Location</b>	<b>Comments</b>	<b>Action</b>
Observation of the meeting	Chris – First time using this platform and no one asked if they could hear or see me	
<b>Siston Common, Webbs Heath,</b>	Lorries have been driving through these places as shortcuts when there is a	SS –

<b>Carsons Road and Goose Green</b> Suez lorries	weight limit. Reported to Siston Parish Council and SGC has vehicle tracked them and used CCTV to investigate which lorries. It stops then happens again after two weeks. I have taken pictures of lorries but told to not put myself at risk, but I am more concerned with the Siston common area.  Cllr Ben Stokes – SUEZ are the contractors so it is best to get in contact with SGC Waste Management. Would be good to invite them or someone from SUEZ to some of the meetings.	We are happy to make this a formal agenda item and SGC needs to action this.  MM to invite trading standards, Waste Management and SUEZ to the next meeting.
Climate Change Group	Like to encourage people to join the meeting and talk about the climate change in South Gloucestershire.	

## 8 Census presentation, Dan Budd, Census Engagement Manager

DB gave a short presentation (*see appendix 4*) regarding Census 2021 which is happening on 21 March 2021. He spoke about the following:

- What the Census is and how it operates every 10 years
- It gives details on society
- All personal information is kept safe
- It is a legal obligation
- Shows how we allocate resources such as dentists and doctors

Any additional help can be found online or through a phone call. The Census is on social media; the website is [www.census.gov.uk](http://www.census.gov.uk). Any further questions can be emailed to Dan at [daniell.budd38@field.census.gov.uk](mailto:daniell.budd38@field.census.gov.uk).

Q If everyone logs on the 21 March, isn't the site going to crash?

A Hopefully not. You can complete this anytime from the 1 March until the end of April.

## 9 Updates from SGC Councillors/Town and Parish Councils

No written reports were received prior to the meeting

*Cllr Ben Stokes reported:*

- There has been support in the communities throughout the pandemic. The Council now has a £1million resilience fund for those eligible or in need or support and grants
- The winter support grant of £198,000 has been spent on families through food vouchers. £38,000 of that has been for emergency assistance grants
- 17,000 on the shielding list across the network support service. There will be more prioritisation and availability for them as we faze out of the roadmap

- There will still be support available. This applies to those in unemployment and whose business are struggling. It is good to all look out for each other.

*Cllr Stephen Reade reported:*

- Golden Valley Nature Reserve is having trouble with parking. There is traffic congestion which leads to towaways and bookings. There needs to be more done about this over the weekend. The community would like double yellow lines moving forward
- The Bath MP has advised people to use the A420 due to the Cleveland Bridge being closed. It is advised to avoid that area but can see it is a nightmare waiting to evolve as adding to the Golden Valley problems too.

## **10 Any other business**

*Lauren Worsley, SGC Community Learning and Skills*

LW briefly explained what she is getting involved in with the community and the projects they are offering. She mentioned:

- SGC is offering learning courses such as IT (for work or home), cooking, wellbeing and employability
- 'Future Bright' which is a work in progress and is looking at helping 16+ getting paid employment for the long term as well as helping them with learning difficulties.

To find out more, please email Lauren at [lauren.worsley@southglos.gov.uk](mailto:lauren.worsley@southglos.gov.uk)

*Maisy Griffiths, Healthwatch South Gloucestershire*

MG explained about what she does towards the Health and Social Care Act and about her organisation, and mentioned the following:

- Helping with people who are experiencing or have needs around Health and Social care
- Working with people with disabilities to ensure they are getting the most out of their healthcare
- Digital inclusion – helping people who are part of the digital divide get all the relevant information they need with help or information
- They are working with SGC and SGC Public Health Team within the vaccine rollout to put on information and listening events. The upcoming events are:
  - 4th March – Disabled People
  - 11th March – Pregnancy and New Mums
  - 18th March – Older People
  - 25th March – LGBTQ+
- How Covid has impacted the organisation and how they are running differently
  - No face to face engagement
  - Working with practices, such as dentists or doctors, and their patients, to help see what is working and not working and how they can help.

To get a ticket for these events, visit the website <https://www.eventbrite.co.uk/o/healthwatch-south-gloucestershire-32608525971>

To find out more about Health Watch South Gloucestershire, visit the website <https://www.healthwatchsouthglos.co.uk> For questions or feedback, please email [contact@healthwatchsouthglos.co.uk](mailto:contact@healthwatchsouthglos.co.uk)

*It was agreed to have the SUEZ Lorries and a section about climate change on the next meeting agenda, and to ask an officer to attend for the climate change section.*

Q How many meetings per year are the CEFs?

A 3 meetings per year

**Meeting closed at 14:16pm**

**Date, time and venue of next meeting**

For further meeting information please visit [www.southglos.gov.uk/CEF](http://www.southglos.gov.uk/CEF)

Or call 01454 868113

Issues and updates from 1 December 2020

Issue and location	Comments	Action
<b>Junction</b>	Cllr Ben Stokes – No plan has emerged from the area yet. It is good to keep an eye on it	
<b>Increase attendee numbers</b>	Would still like to see this increasing so we can engage with community more and address any concerns	Spread the word within community groups to join the meetings.
<b>Walking group</b>	This group is now called the 'East Bristol Fringe' group after talking to the multiple Parish Councils.  Walks are across Bristol and Bath pathways.	

## South Gloucestershire Covid-19 Dashboard



Covid-19 cases in the latest week	Rate per 100,000 people for the latest week	How much the rate has changed compared to the previous week	Covid-19 patients in North Bristol NHS Trust	Number of people in S.Glos with at least one dose of the vaccine	Covid-19 associated deaths in the most recent week
137	48.1	-28.0%	37	89021	11

Dashboard pages are linked here:

Cases	7-day Rate	Age Bands	Hospital Occupancy	Deaths	Vaccinations	Further Links
-------	------------	-----------	--------------------	--------	--------------	---------------

Due to the time it takes for a Covid-19 test to be processed, the latest weekly figures cover a seven day period that ended five days ago

A list of useful resources can be found on the Further Links page above

[Please click here for a map of confirmed cases in your local area](#)

[www.southglos.gov.uk](http://www.southglos.gov.uk)



## South Gloucestershire Covid-19 Dashboard

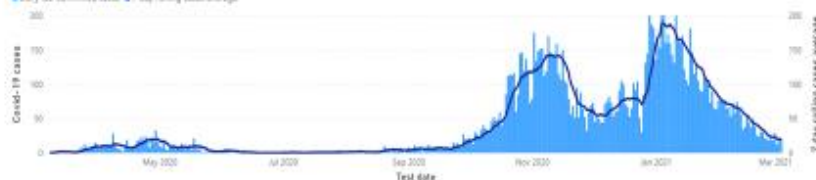
Covid-19 cases

Total cases	Number of cases in the week up to 04/03/2021
14687	137

**Notes:** Cases are assigned to the day the first sample was taken from the person being tested (the specimen date). Each day when we receive reports of new cases, the specimen date of those cases could be from the previous few days, due to the time-lag between specimen date and reporting date. It can take up to 5 days for a specimen to be processed and reported, therefore data from 5 or more days ago can be considered complete.

Daily Covid-19 cases and 7-day average cases by test date

■ Daily lab-confirmed cases ■ 7 day rolling cases average



More information about this data is available here: <https://coronavirus.data.gov.uk/about-data>

[www.southglos.gov.uk](http://www.southglos.gov.uk)



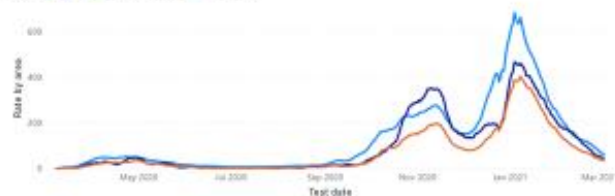


## South Gloucestershire Covid-19 Dashboard

7-day rate per 100,000 population



Legend: England (blue), South Gloucestershire (green), South West (orange)



Date	England	South Gloucestershire	South West
04/01/2021	62.8	45.1	24.4
03/02/2021	86.1	48.8	35.9
03/03/2021	75.0	49.5	37.7
05/03/2021	74.4	55.8	40.1
28/02/2021	81.5	55.5	41.9
27/02/2021	86.6	58.6	46.1
26/02/2021	95.6	59.1	49.8
25/02/2021	97.3	66.3	53.9
24/02/2021	103.1	76.5	58.1
23/02/2021	106.0	82.1	63.2
22/02/2021	112.7	87.8	66.2
21/02/2021	117.3	95.1	68.8

**About the data:** The figures in the above graph take the number of cases of Covid-19 reported in the previous 7 days and present it as a rate per 100,000 people. The source used to estimate the size of the population are from the Office for National Statistics and can be found here: [www.ons.gov.uk/peoplepopulationandcommunity/populationandmigration/populationestimates/datasets/populationestimatesforenglandandwales/scotlandandnorthernireland](https://www.ons.gov.uk/peoplepopulationandcommunity/populationandmigration/populationestimates/datasets/populationestimatesforenglandandwales/scotlandandnorthernireland)

[www.southglos.gov.uk](http://www.southglos.gov.uk)



## South Gloucestershire Public Health Team update COVID-19 Local Outbreak Management

- Local Covid-19 situation and how to find the information

<https://beta.southglos.gov.uk/covid-19-dashboard-for-south-gloucestershire/>

- Roadmap
- Rapid Testing, Contact Tracing and Surge Testing.
- Vaccination
- Community support and supporting vulnerable people

Contact [publichealthsouthgloucestershire@southglos.gov.uk](mailto:publichealthsouthgloucestershire@southglos.gov.uk)

[www.southglos.gov.uk](http://www.southglos.gov.uk)



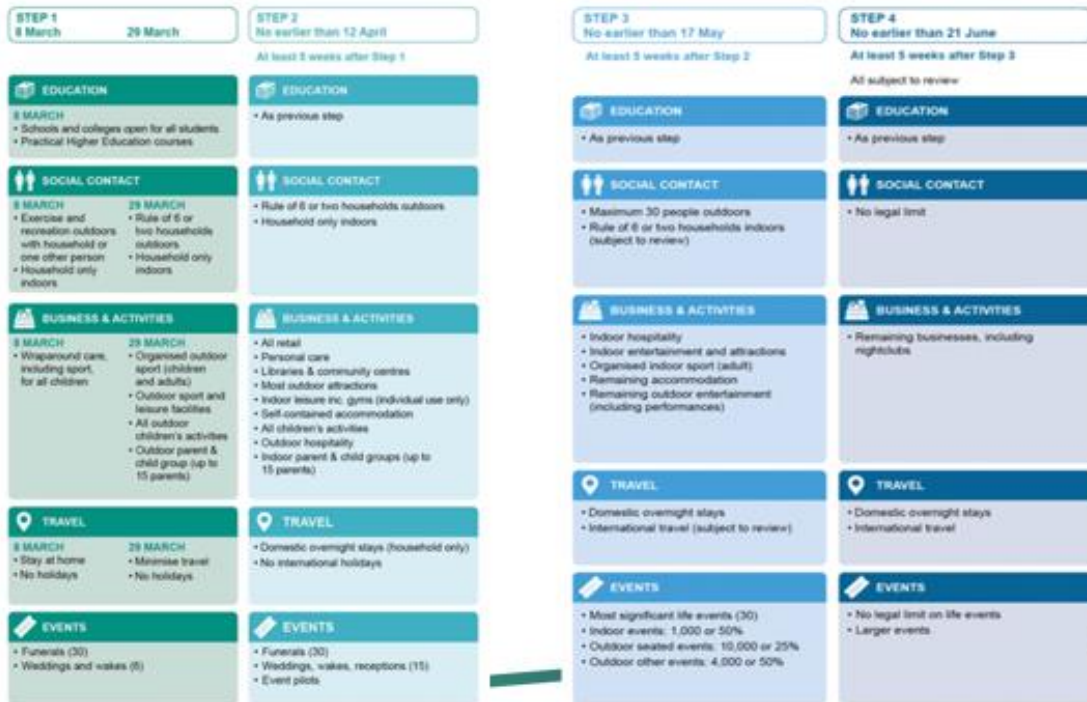
### Roadmap out of lockdown

- Each step is assessed by government against **four tests** before restrictions ease, starting with the return of schools on 8 March.
  - Each stage will be at least 5 weeks apart. This can be extended.
1. **The vaccine deployment programme continues successfully.**
  2. **Evidence shows vaccines are sufficiently effective in reducing hospitalisations and deaths in those vaccinated.**
  3. **Infection rates do not risk a surge in hospitalisations which would put unsustainable pressure on the NHS.**
  4. **Our assessment of the risks is not fundamentally changed by new Variants of Concern.**

[www.southglos.gov.uk](http://www.southglos.gov.uk)



# Roadmap



[www.southglos.gov.uk](http://www.southglos.gov.uk)

South Gloucestershire  
Council

## Schools - returning to face-to-face education – 8th March

- Schools will welcome children and young people back from **8 March**.
- We are working closely with head teachers to ensure schools reopen safely.
- In school is the best place for your child to be. They'll be able to catch up with their education and be with their friends and teachers again.
- Schools return planning includes the continuation of the regular rapid testing of school staff as well as secondary school and college pupils
- Also recommended is the use of face coverings for all pupils in secondary school, further education and higher education is extended to all indoor environments (including in the classroom)

[www.southglos.gov.uk](http://www.southglos.gov.uk)



### Covid-19: What types of testing are available?

South Gloucestershire  
Council  
Delivering for you

If you have symptoms of Covid-19, you must book a standard PCR test. DO NOT go to a rapid or community surge test site.

Test	What type of test is this?	Who is it for?	How do I book?
<b>Standard PCR test:</b>	The PCR test is the <b>ONLY</b> test for Covid-19 of people with symptoms.	People with symptoms - a high temperature, a new, continuous cough or a sudden loss or change to your sense of taste or smell.	Book online at <a href="http://gov.uk">gov.uk</a> or call <b>119</b> as soon as you develop any symptoms of Covid-19.
<b>Community surge test:</b>	This is a standard PCR test for people without symptoms to help us learn more about the Covid-19 variant in South Gloucestershire.	People (over 16) who live in certain postcode areas only. Check online <a href="http://www.southglos.gov.uk/testing">www.southglos.gov.uk/testing</a>	No booking required, check if you live in one of the postcode areas online at <a href="http://www.southglos.gov.uk/testing">www.southglos.gov.uk/testing</a> Details of locations of testing sites are also listed here.
<b>Community surge (home) test collect and drop:</b>	This is a standard PCR test for people without symptoms to carry out at home if they cannot attend one of our community surge testing sites to help us learn more about the variant.	People (over 16) in certain postcodes, without symptoms, who cannot get to a community surge test site.	No booking required, check if you live in one of the postcode areas online at <a href="http://www.southglos.gov.uk/testing">www.southglos.gov.uk/testing</a> Details of locations of collect and drop centres are also listed here.
<b>Rapid lateral flow test:</b>	This is a quick turnaround test for people without symptoms to find otherwise undetected cases.	All critical workers and residents of Bradley Stoke, Kingswood and Yate who are 16 years or older without symptoms of coronavirus.	Book regular rapid tests online at <a href="http://www.southglos.gov.uk/book-rapid-test">www.southglos.gov.uk/book-rapid-test</a>

## Rapid Testing

- 3 sites in South Glos- Kingswood, Bradley Stoke and Yate.
- Rapid testing- also known as Community Testing or Lateral Flow Testing seeks to find residents who have Covid-19 but are not displaying symptoms- asymptomatic.
- Anyone can access these tests, but we are asking those who cannot work from home and who deliver key services to the community specifically to use this opportunity.
- Book a Covid-19 rapid test – for people without coronavirus symptoms

[www.southglos.gov.uk](http://www.southglos.gov.uk)





## Contact Tracing

### The phone call that could save someone's life.

- Local contact tracing is now happening
- Call handlers work to understand what contacts have been made during the period of time you've been infectious.
- This is not blaming - we all need to live our lives within the guidance
- It helps identify who else might be infected so we can ask them to isolate before they are infectious or as soon as possible
- This breaks the chain!
- Contact tracers can also put you through to our Covid Support Team to get support while you are isolating.

[www.southglos.gov.uk](http://www.southglos.gov.uk)



## Current- Surge Testing

- South Gloucestershire Council –PH have been asked by the Government to provide additional community testing for Covid-19.
- Following the identification of a variant of concern in the area. We are inviting residents who live in specific postcode sectors
- This started on Monday 1st March until Sunday 14th March.

Affected Areas: Patchway Bradley Stoke, Little Stoke

BS32 0
BS32 8
BS32 9
BS34 5
BS34 6

[www.southglos.gov.uk](http://www.southglos.gov.uk)



## Local Covid-19 Vaccination update

- Plans are being nationally driven with local implementation and roll out to national specifications.
- The aim to vaccinate all individuals in the four most vulnerable groups by the 15th February was achieved.
- The aim is for everyone aged 50 and over, or at risk, to be offered a first dose of the vaccine by the 15th April and for everyone aged 18 and over to have been offered a first dose by 31st July.
- The JCVI (Joint Committee on Vaccination and Immunisation) has included unpaid carers and all people on the GP Learning Disability Register on the vaccination priority list (UK wide) in group 6.

[www.southglos.gov.uk](http://www.southglos.gov.uk)



## Local Covid-19 Vaccination update

- For Unpaid Carers:
- Bristol and South Gloucestershire: [info@carerssupportcentre.org.uk](mailto:info@carerssupportcentre.org.uk) or 0117 965 2200
- For people with Learning Disabilities: 0300 1245 888
- More detail here: COVID-19: Mass vaccination - Healthier Together ([bnssghealthiertogether.org.uk](http://bnssghealthiertogether.org.uk))
- Once you receive the vaccine you still need to follow all Covid-19 guidance.

[www.southglos.gov.uk](http://www.southglos.gov.uk)





## How to report breaches of Covid-19 restrictions

**South Gloucestershire Council**  
Delivering for you

If you know someone is breaking the rules, please report it and help us keep South Gloucestershire safe.

**Report a business which is not complying with the rules**  
Email [FoodandHealth@southglos.gov.uk](mailto:FoodandHealth@southglos.gov.uk) call 01454 868001

**Report gatherings of more people than restrictions allow**  
Report online [www.avonandsomerset.police.uk/report/breach-of-covid-19-restrictions/](http://www.avonandsomerset.police.uk/report/breach-of-covid-19-restrictions/) or call police on 101 (non emergencies) or 999 (emergencies)

**Stop the spread. Do the right thing.**

[www.southglos.gov.uk](http://www.southglos.gov.uk)



## Resources to share information and guidance for events

- <https://beta.southglos.gov.uk/covid-19-resources/>

**South Gloucestershire Council**  
Delivering for you

**HANDS** – wash your hands

**FACE** – wear your face mask

**Parents – keeping you safe at our school**

**What to do if there is a confirmed case of Covid-19 at your child's school:**

- I have one child at school and their bubble is closed due to a confirmed case.
- Do not come to school for any reason
- Isolate the child
- Only get a test if your child develops symptoms
- Where to confirm return

<https://beta.southglos.gov.uk/guidance-for-events-and-celebrating-occasions/>

[www.southglos.gov.uk](http://www.southglos.gov.uk)



## Community Support- Phones

- **Main Coronavirus helpline:** help and support re Coronavirus, contact freephone **0800 953 7778**.
- **Southern Brooks Community Hub**, for support accessing community services, contact [Communitysupport@southernbrooks.org.uk](mailto:Communitysupport@southernbrooks.org.uk) **0333 5774666** (Monday-Friday 9am-5pm)
- **Mutual Aid and Community Support Directory**, to find out who is providing neighbourhood help and assistance in your area, contact **01454 864886** (from 9am to 5pm, Monday to Friday)
- **Council contact Centre**, for all other council enquires contact **01454 868009** (from 9am to 5pm, Monday to Friday).

[www.southglos.gov.uk](http://www.southglos.gov.uk)



## Community Support- Digital

- [South Glos Covid Pages](#)
- [Help and Support Directory](#)
- [UK Government Coronavirus Pages](#)
- [Supporting Vulnerability in South Glos](#)

### Filter by your location

- ☐ Badminton
- ☐ Almondsbury
- ☐ Alveston
- ☐ Aust
- ☐ Bitton

[More](#)

### What do you need help with?

- ☐ Crisis support
- ☐ Dog walking
- ☐ Essential travel
- ☐ Food (parcels; foodbank; cooked meals)
- ☐ Funding for community organisations

[www.southglos.gov.uk](http://www.southglos.gov.uk)



## Report from Avon Fire and Rescue

Select Local Authority:	Select Community Engagement Forum	Select Month:	Year:
SGLOS	Boyd Valley	March	2021
			<a href="#">Print PDF</a>

## South Gloucestershire

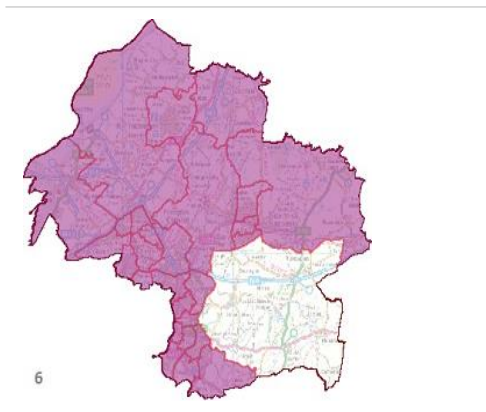
## Boyd Valley

## Community Engagement Forum

## Fire Service Summary

March 2021

## Neighbourhood Map:



The Community Engagement Forum are unique areas set up by the Local Authority, they do not match Ward areas. The incident and community safety information detailed below is for the Wards that most closely align

Note: This report is based on the old ward boundaries and will be updated when new ward maps are available to us.

## Community Fire Safety Activity:

## Total of last Three months

Nov 2020 ~ Jan 2021

Home fire safety visits	6
School visits	0
Community Education Events	0

## Fire Incidents:

	Feb 2019 - Jan 2020	Feb 2020 - Jan 2021	Change
Deliberate vehicle fires:	4	4	0
Deliberate small fires:	10	10	0
Deliberate large non-vehicle fires:	2	1	-1
Accidental dwelling fires:	5	2	-3
Other fire incidents:	14	16	2
Non-fire emergency incidents:	37	50	13
False Alarm incidents:	65	46	-19
Total number of incidents attended:	137	129	-8

## Station Managers report:

Kingswood Fire Station personnel have been volunteering for marshalling at Bath Racecourse for the Covid 19 vaccinations and at Emersons Green SciencePark for the surge testing. We are still carrying out home fire safety visits for the most vulnerable, and if you feel you need one then please get in touch on the website. Fire service personnel are also still helping the Ambulance service by driving ambulances and going to CAT 1 incidents. As you can see the overall incidents have dropped recently, however, we are still being mobilised to all incidents and have full PPE available to deal with cases of Covid 19. All Fire service personnel are now being tested twice away with the Lateral Flow Test.

## National Campaign Theme:

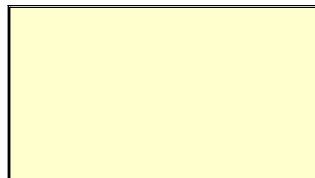
This spring Avon Fire & Rescue Service are working with key agencies to target the most vulnerable in our community for a home fire safety visit, whilst making sure that we provide clear safety advice for the wider audience.

## How to contact us:

**Fire Station:** Kingswood  
**Station Manager:** Lee Rogers  
**Station Address:** Tennis Court Road  
 Kingswood  
 BS15 4LB  
**Email:** Lee.Rogers@avonfire.gov.uk  
**Telephone:** 01179 262061

**In an emergency:** 999 or 112  
**For non emergency** 01179 262061

## Local Contact:



Web [www.avonfire.gov.uk](http://www.avonfire.gov.uk)

[f avonfirerescue](#)

[@avonfirerescue](#)

,11/02/2021

A presentation slide with a purple gradient background. On the right side, there are decorative circular patterns made of dots and lines. The text is in white.

cyfrifiad  
census  
2021

**Census 2021**

Dan Budd - Census Engagement Manager  
South and West Gloucestershire  
(South Glos, Stroud & Forest of Dean)

@Census2021 | @Cyfrifiad2021

 Office for National Statistics

1

## Census Engagement Manager

- **Dan Budd** brief background
- The role of the **CEM**
  - Engagement in the local community
  - Working with South Glos, Stroud & Forest of Dean LAs
  - Part of a BIG ONS team!

A solid purple horizontal bar at the bottom of the slide.

 Office for National Statistics

2



# The census

- The census is a survey that happens every 10 years and everyone takes part.
- The ONS is responsible for the census in England and Wales.
- The census is important because it gives the most detailed information we have about our society.
- Scotland and Northern Ireland hold their own around the same time.

## Why we have a census

The census provides information that government needs to:

- Shape policy
- Allocate resources
- Plan services
- Monitor equality



# Census 2021 is happening now!

- **Households across England and Wales** are receiving their census packs right now
- The **Census Contact Centre is up and running** and available on **0800 141 2021** (for people living in England)
- The **website is online** and full of useful support and guidance - visit **[www.census.gov.uk](http://www.census.gov.uk)**
- **Census Support Centres are *here to help*\*** - to find your local centre, call the contact centre or visit **[www.census.gov.uk](http://www.census.gov.uk)**

*\*(currently only open for phone calls only due to Covid-19 restrictions)*

## Keeping personal information safe

- Before we publish our statistics, we make sure that they don't include any personal information.
- The information we collect in the census remains anonymous for 100 years.
- Everyone must complete the census. Legislation made the modern census a legal obligation in 1920.

